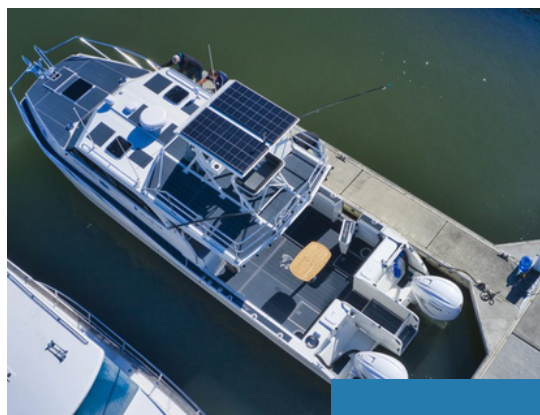




# 3500/3700 PLATINUM SPORTS



## SPECIFICATIONS

3500 Hull L.O.A - 11.2m

3700 Hull I.O.A - 11.8m

Beam - 3.50m

Fuel Capacity - 2 x 500L Tanks

Water Tank - 200L

Draft - 600mm (approx.)

Hull Thickness 6mm / Side Thickness - 4mm

Pax Capacity 3500 - 12

Pax Capacity 3700 - 14

**HYDROFLOW**  
**GEN III**

POWERED BY



**YAMAHA**



## Deck Hardware

- Sailfish S/S Bowsprit and Roller
- Lonestar S/S GX4 Drum Winch with breaker, switch, 90m double braid rope, 9m chain, MMX4 gal anchor
- Anchor Hatch and Drain
- Du Pont Custom Paint - White interior with hull side colour choice from Sailfish selection, striping & rear raised decals
- Bow Rail & Bollards - 2 x stern, 2 x mid, 1 x bow
- Antifouled and anodes
- 2 x Hull Inspection Ports
- Built in Foam Buoyancy

## Cabin

- Centre cab-helm with offset steering position, Stb side berth with double mattress & divider wall, Stb side companion way to berth, Port side berth with single mattress
- Sailfish Premier upholstered seats with gas pedestals mounted on seat boxes
- Enclosed Hardtop with radio console, toughened glass front windows, side sliding windows, opening roof hatch above driver
- Rear lockable glass door
- Alfresco style opening rear cabin window above servery area
- Galley unit inc 130L fridge, microwave, sink, acrylic benchtop and soft close drawer set
- Port side L shape lounge with open storage under
- Drawer set under port side lounge at cabin entrance
- Table on gas adjustable post with infill cushion to convert L shape lounge into a single bed
- Step down toilet/shower with 48lt holding tank, macerator pump, sump pump, sink and showerhead
- 200L Fresh water system
- Forward cabin roof hatch above mattress
- EVA cabin flooring
- Targa side steps
- Suede Covered Dash Top & Carpeted Shelf with 2 flush mount drink holders

## Cockpit

- BBQ & Servery unit on port side incorporating slide out Galleymate BBQ, stainless steel sink with freshwater tap, storage & acrylic benchtop
- Side door - starboard rear cockpit
- Deluxe double skinned roof extension with 2 downlights
- EVA Flooring & transom gunwale kneepads
- Port & Stb Underfloor kill tanks
- Transom walkout with rear door and S/S ladder
- Port transom sink & freshwater tap
- Transom shower with hot/cold mixer
- Battery switch management locker
- Starboard seat box with cushion with 47lt Evacool Fridge Freezer and slide under
- Storage lockers for batteries and fuel filters
- Gunwale kneepads at transom
- Self-draining cockpit
- Cockpit handrails

## Outboards and Steering

- Yamaha F350NSB 4 stroke counter rotating outboards with built in digital electronic steering and CL5 digital display
- Stainless Steel Propellers
- Stainless steering wheel & tilt adjustable steering helm

## Electrical System

- 2 x 800CCA marine start batteries & boxes
- 240v shore power system with 3000w inverter, charger, solar input and galvanic isolator
- AM/FM Bluetooth Stereo with 2 speakers in cabin and 2 panel cockpit speakers in hardtop extension roof
- VHF Radio & Aerial
- Wireless phone charger
- Flush Mount Compass on dash
- Single Windscreen Wiper & washer kit
- Marine start batteries in battery boxes x 2
- BEP Battery switch cluster and management locker
- 400 A/hr Lithium house battery system with 7" C Zone monitoring display
- 200 Watt solar panel & controller
- Marinc remote searchlight
- Hot water system
- Two Cabin fans
- 12v power socket & USB charger driver's side
- LED Navigation lights and Anchor light
- LED Bow lights
- LED Cabin Downlights
- 2 x LED Forward cabin lights
- LED Centre flood cockpit light
- LED Cockpit awning bar light
- LED Under Gunwale strip lights
- LED Underwater light
- Underfloor auto bilge pumps with auto/manual switch panel & alarm
- Marine tinned wiring
- 2 x LED targa side docking lights
- 22" (12 volt) TV with roof antenna

## Fishing Equipment

- Deck wash with internal pump & removable hose
- Twin Live Bait Tanks with internal pump and LED light
- Custom Sailfish Cutting Board, LED light and saltwater tap for wash down
- 7 x Alloy welded rod holders on hardtop
- 2 x Alloy welded rod holders on transom walkout
- 4 x Alloy welded rod holders positioned in gunwale
- Burley Bucket
- Offshore Safety Equipment
- EPRIB