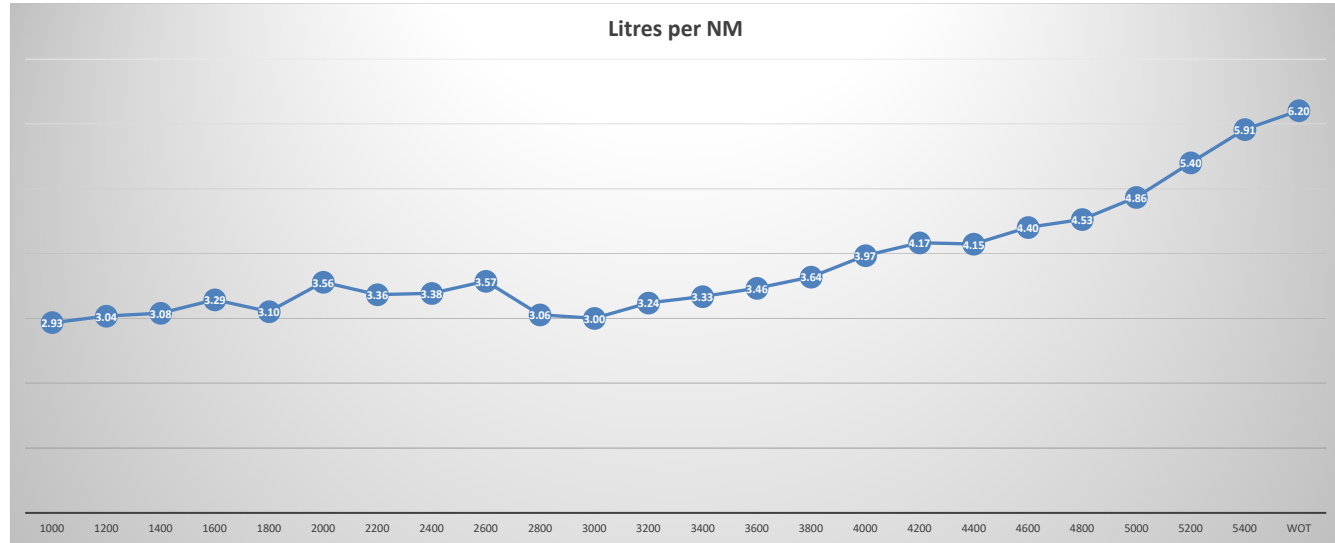


Revs	Speed	Litres Per Hour	Litres per NM
1000	4.6	13.5	2.93
1200	5.6	17	3.04
1400	6.5	20	3.08
1600	7	23	3.29
1800	8.7	27	3.10
2000	9	32	3.56
2200	11	37	3.36
2400	13	44	3.38
2600	14	50	3.57
2800	18	55	3.06
3000	20	60	3.00
3200	21	68	3.24
3400	24	80	3.33
3600	26	90	3.46
3800	27.5	100	3.64
4000	29	115	3.97
4200	30	125	4.17
4400	34	141	4.15
4600	35	154	4.40
4800	36	163	4.53
5000	37	180	4.86
5200	40	216	5.40
5400	41.6	246	5.91
WOT	44	273	6.20

WOT = 5800RPM



Speed	Litres per NM
4.6	2.93
5.6	3.04
6.5	3.08
7	3.29
8.7	3.10
9	3.56
11	3.36
13	3.38
14	3.57
18	3.06
20	3.00
21	3.24
24	3.33
26	3.46
27.5	3.64
29	3.97
30	4.17
34	4.15
35	4.4
36	4.53
37	4.86
40	5.40
41.6	5.91
44	6.20

